





Area Map



These particulars, whilst believed to be accurate are set out as a general outline only for guidance and do not constitute any part of an offer or contract. Intending purchasers should not rely on them as statements of representation of fact, but must satisfy themselves by inspection or otherwise as to their accuracy. No person in this firm's employment has the authority to make or give any representation or warranty in respect of the property.

3 Middleton Road, Manchester, M8 5DT

T: 0161 773 3978 | info@amcocommercial.co.uk

Details

Amco Commercial are pleased to offer this ground floor retail premises.

With A5 planning already approved this space is ideal for a hot food takeaway.

The premises are located on a prominent main road right in the heart of a popular retail area. Neighbouring properties include Lidl, Sainsbury's, Dominos, and Pizza Hut.

The accommodation is arranged over two floors with a ground floor retail area and basement storage.

The area is measured as follows:

Ground Floor Retail: 42.7sqm (460sqft)

Basement Storage: 35.6sqm (372sqft)

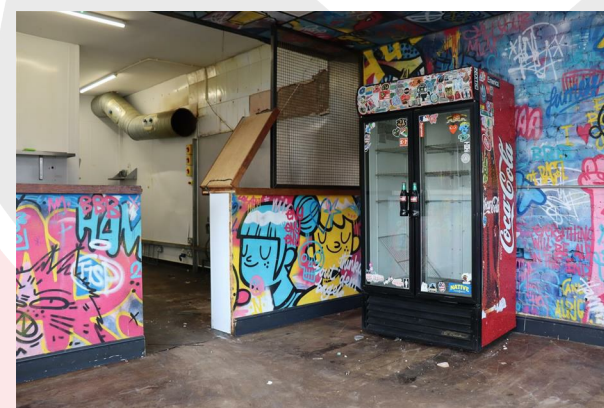
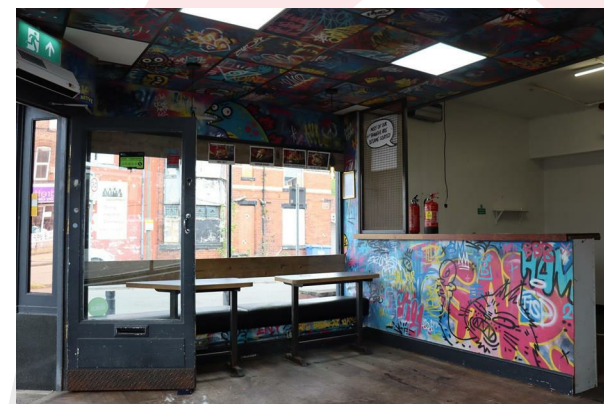
The property is offered by way of a new flexible eFRI lease for a term to be agreed subject to periodical upward only rent reviews (exclusive of all other outgoings plus VAT if applicable).

If you are interested in viewing this property, or to request additional information, please do not hesitate to contact one of our agents on 0161 773 3978.

These particulars are only a guide. They are not exact or guaranteed. Property offered subject to contract.

Viewing

Please contact us on 0161 773 3978 if you wish to arrange a viewing appointment for this property or require further information.



Zoopa



rightmove

